

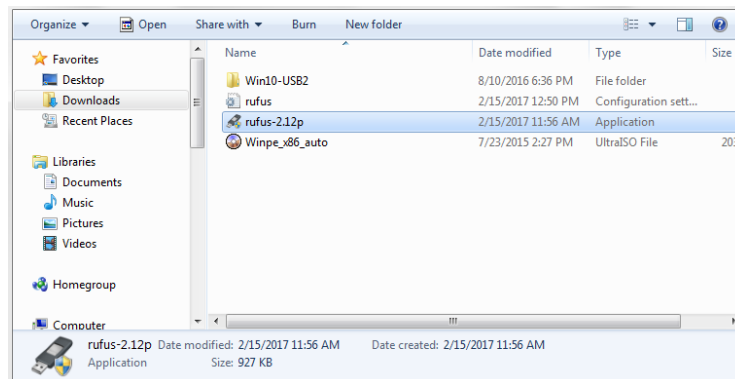
Windows 10 (32-bit) Installation

Preparation

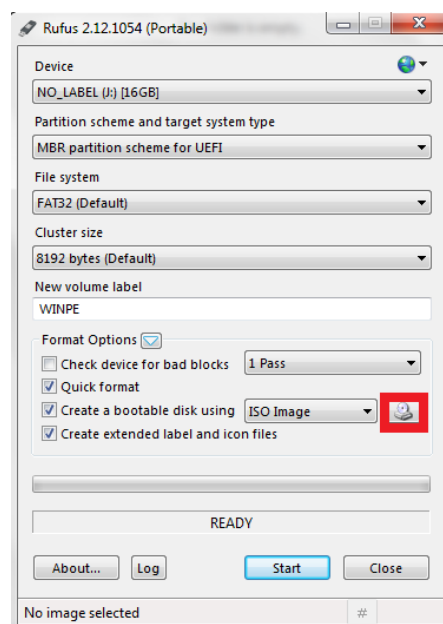
You will need the following:

- A USB Card Reader that can read Micro-SD cards.
- File “Win10 Install x86” (which can be found [HERE](#))
- Your device’s Firmware (which can be found [HERE](#))
- A PC that is Windows 7 or higher
- A USB Hub (If installing on tablets)
- A USB Keyboard (If installing on tablets)
- A .RAR file-extracting program (7-zip, etc.)
- At least one 8GB MicroSD Card Reader

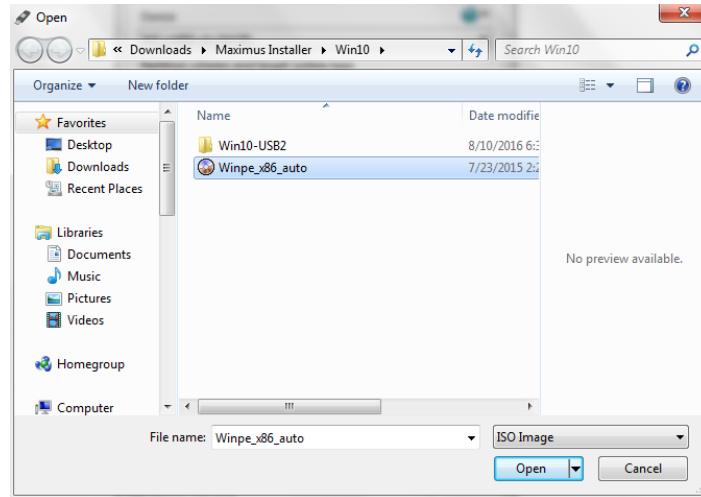
- 1.) Download and extract the file: “WIN10 INSTALL x86”
- 2.) Insert your USB Flash Drive into your PC and open “RUFUS-2.12P”



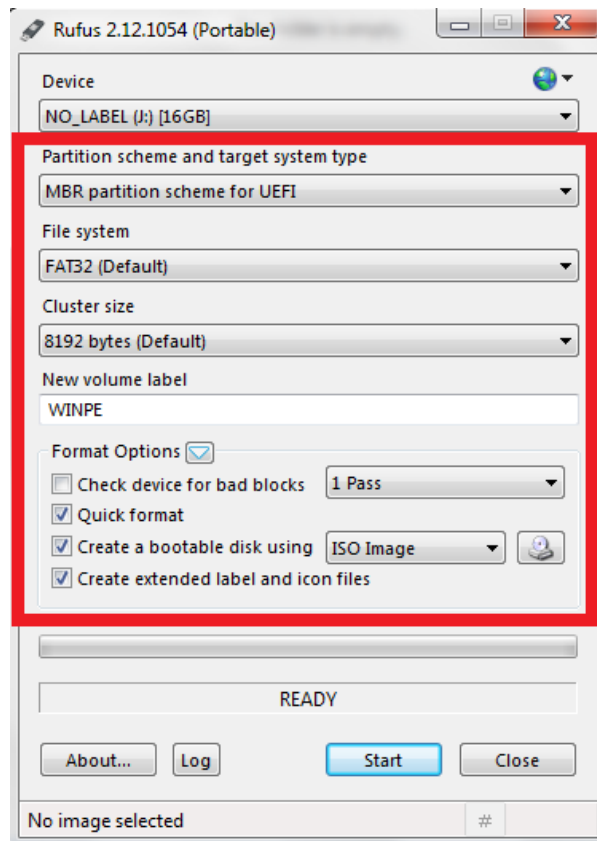
- 3.) In the RUFUS menu, click on Image Select icon, highlighted in RED.



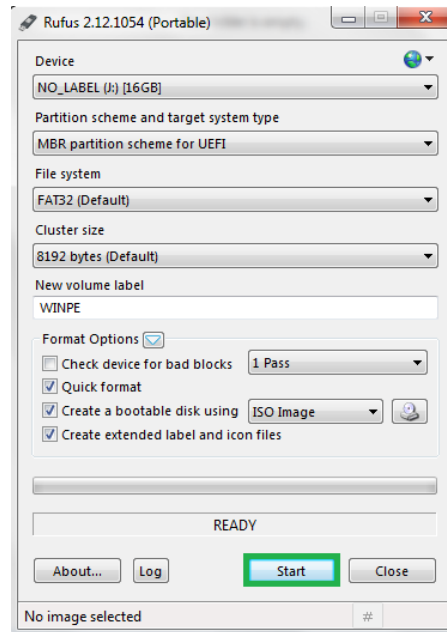
- 4.) You will then be taken to a menu similar to the image below. Look for your Win10 Installation Tool folder and select “WINPE_X86_AUTO.”



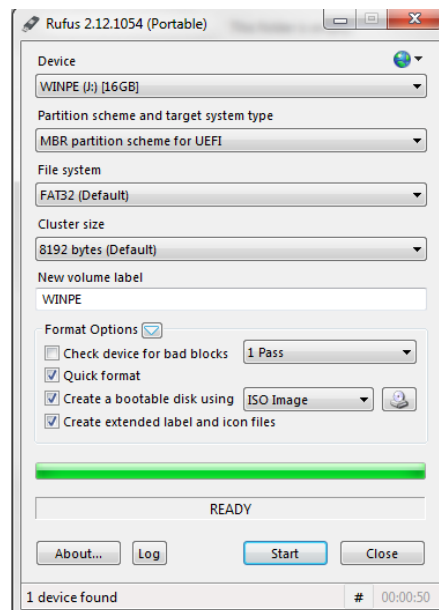
- 5.) In the image below, make sure the following options are selected (highlighted in RED)



6.) With the image loaded and the options set, click on START (highlighted in GREEN)

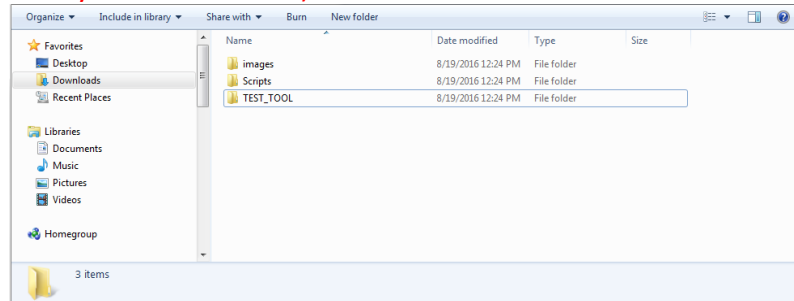


7.) The program will make the USB bootable for your device and a progress bar will appear. When progress bar is full, the process is complete. Close Rufus.



8.) Check the bottom of your Laptop for the serial number and read the first 4 digits. Download the matching firmware file. You can find the firmware [HERE](#).


- 9.) Once you have downloaded the correct firmware, extract the .RAR file, it should give you the files listed below. (NOTE: The folder named "TEST_TOOL" is not needed to complete the installation and may not be included)



- 10.) Select all folders, and copy them onto the USB. This will take several moments.

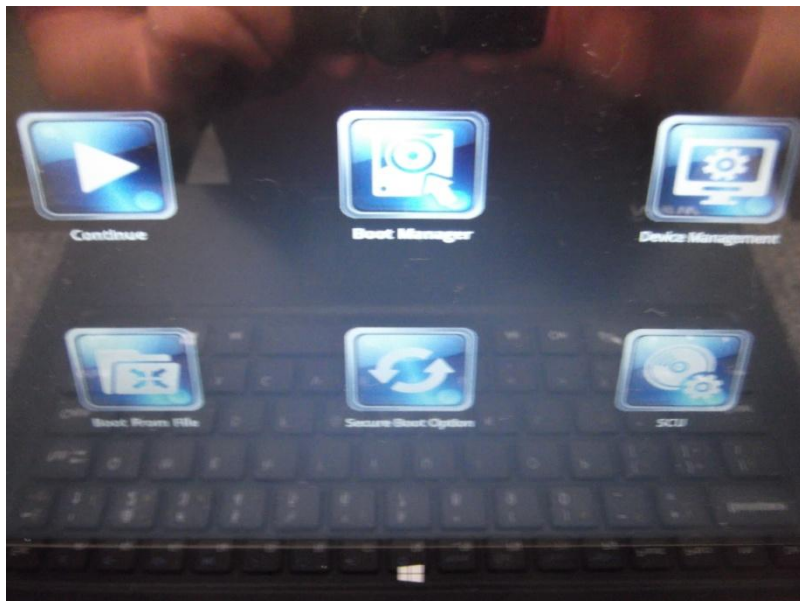
- 11.) USB is now ready for use.

Installation

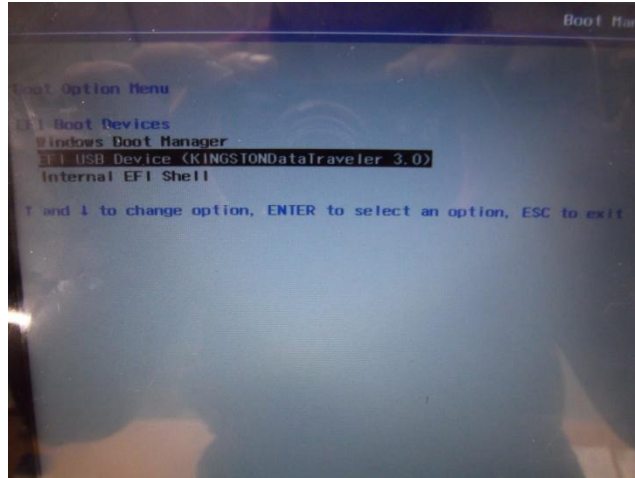
- 1.) Make sure your device is powered off. Connect the flash drive, keyboard and device using a hub.
If you're installing on an Iview Laptop, make sure that the keyboard switch is set to  (Unlock) Position.



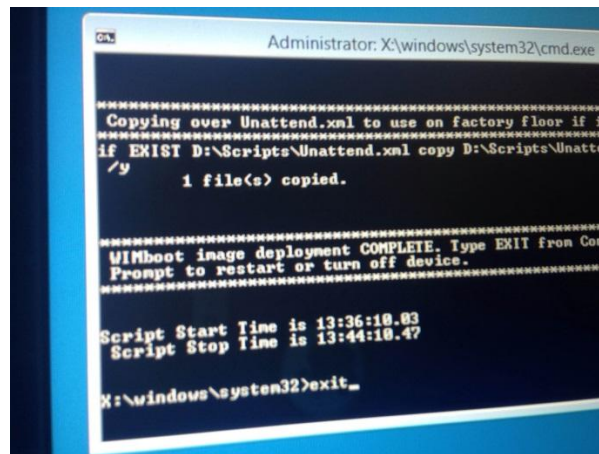
- 2.) Power on the device while rapidly pressing ESC on the keyboard.
- 3.) A Boot menu will pop up. Press the Right Arrow Key to highlight BOOT MANAGER and press Enter.



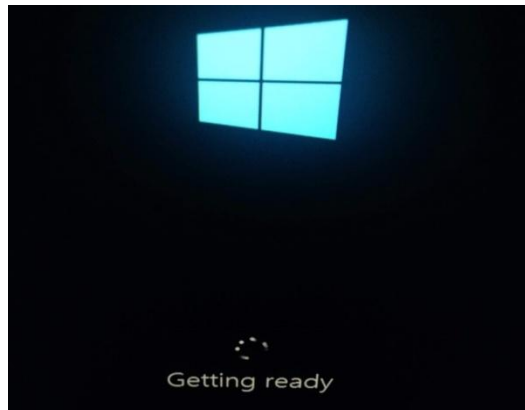
- 4.) When the boot menu pops up, press the down arrow key to select your USB Flash drive and press Enter.



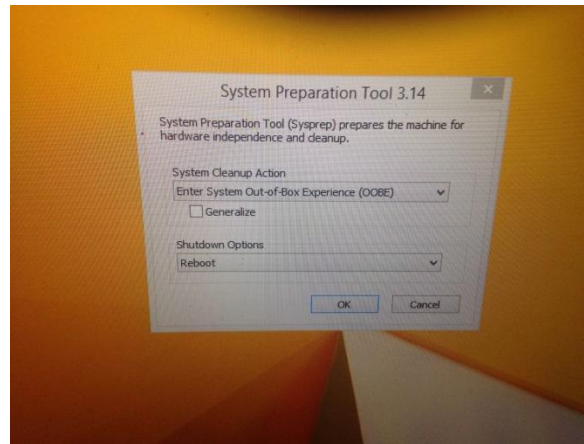
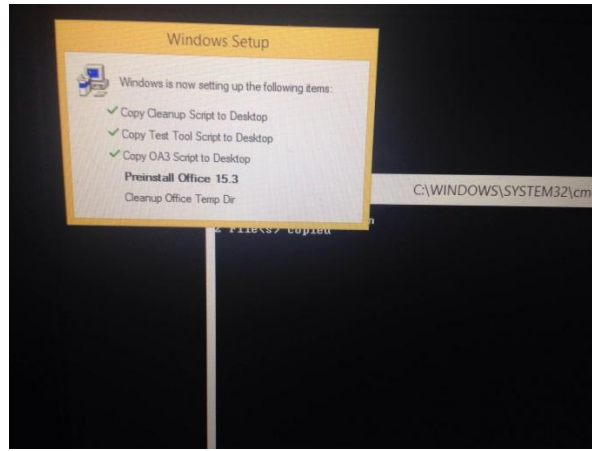
- 5.) Installation will begin. The procedure might take more than 20 minutes.



- 6.) Device will reboot automatically. If device does not reboot, type EXIT at the command prompt and press Enter.



7.) "System Preparation Tool" will pop up, Click "ok"



8.) Device is ready for use.

