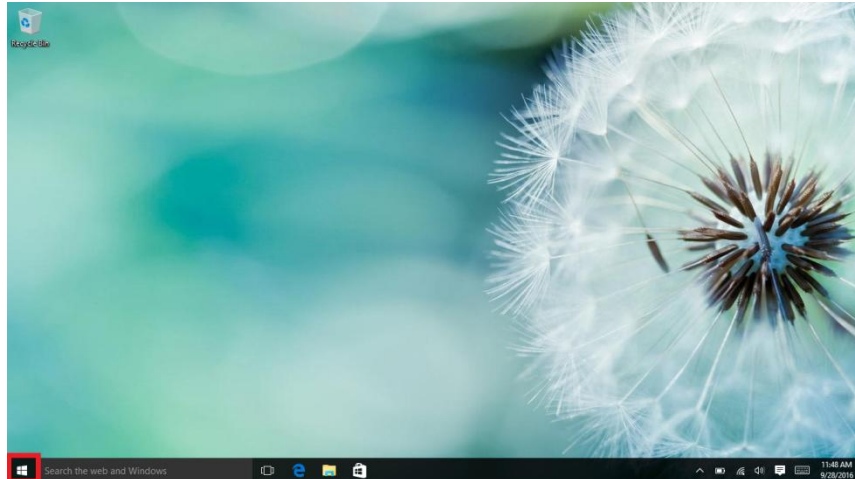
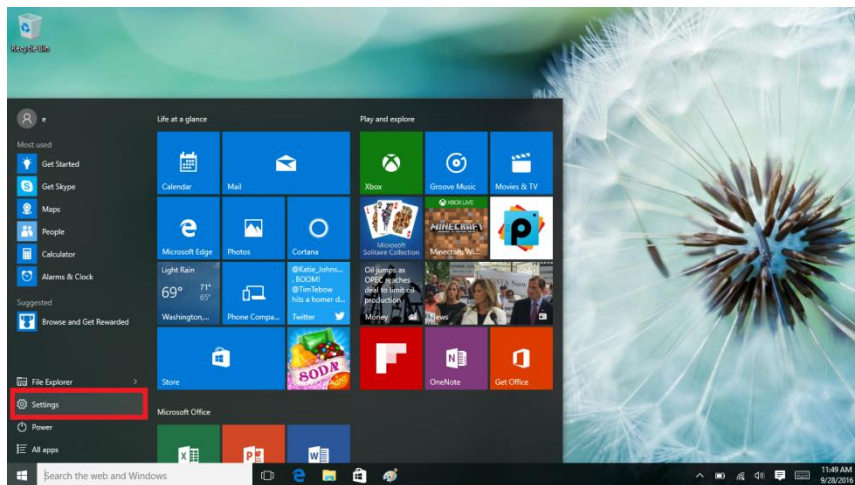


Pairing Your Bluetooth Keyboard

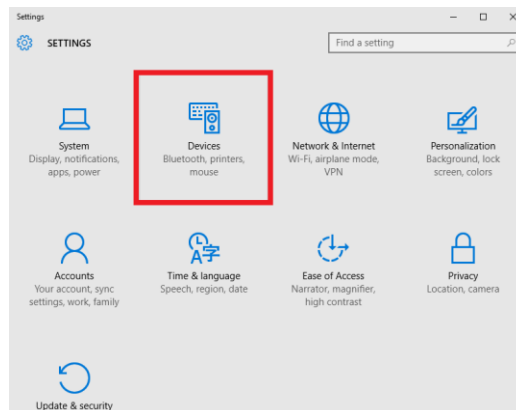
1. Select the Windows Icon, located on the bottom-left corner of your tablet screen. This will bring up the Start Menu



2. In the Start Menu, select **SETTINGS**. This will bring up your Windows Settings Menu.



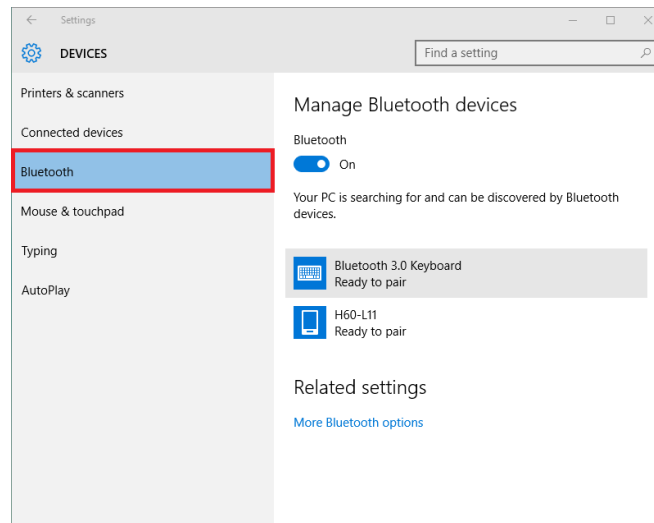
3. In the settings Menu, select **DEVICES**. You will be taken to the Devices menu.



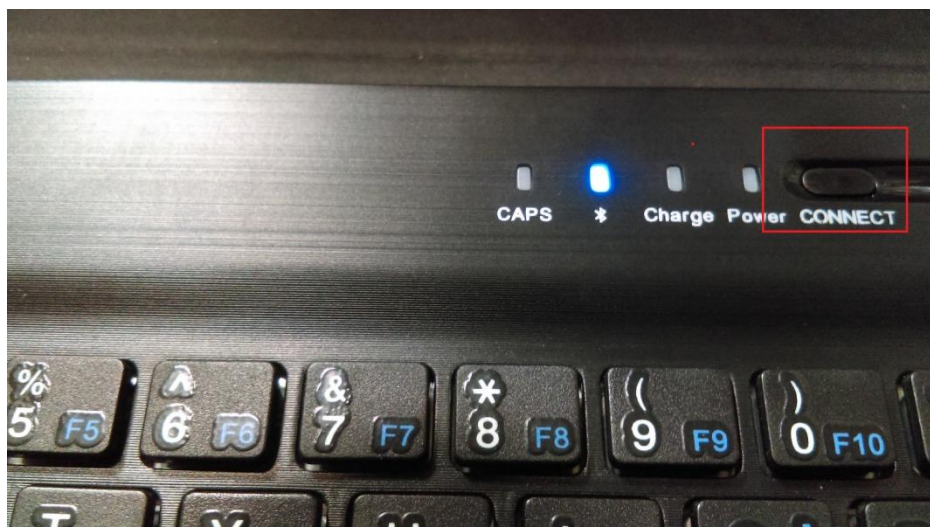
4. Before Proceeding, make sure your Bluetooth Keyboard is powered on.



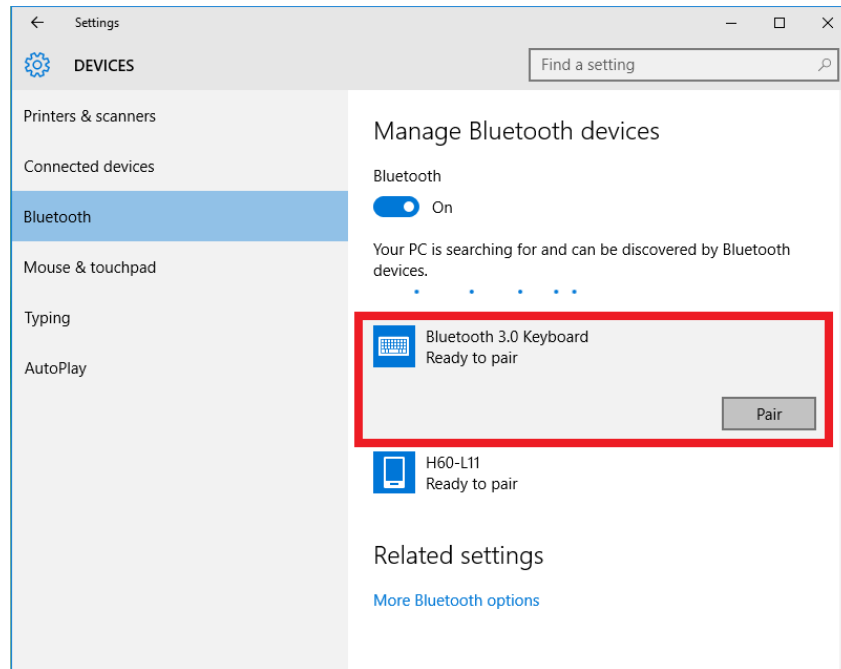
5. Back to the Devices Menu, select **BLUETOOTH**. A list will appear, showing all the available devices.



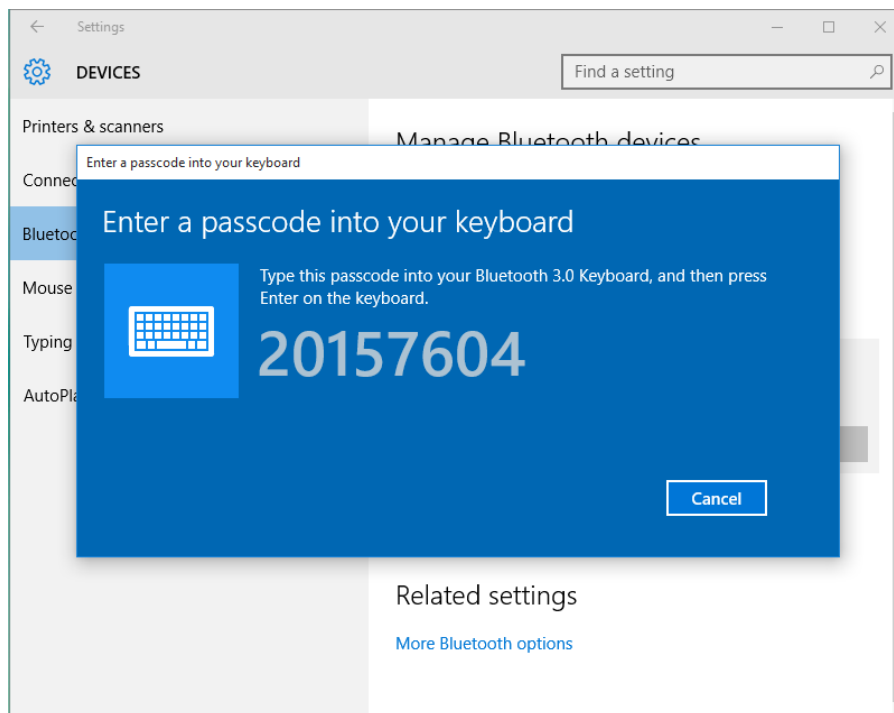
6. On your Keyboard, press the **CONNECT** button, located near the power switch. The Bluetooth light will start flashing.



7. On your screen, an item will pop up saying **BLUETOOTH 3.0 KEYBOARD**. Select the item, followed by **PAIR**.



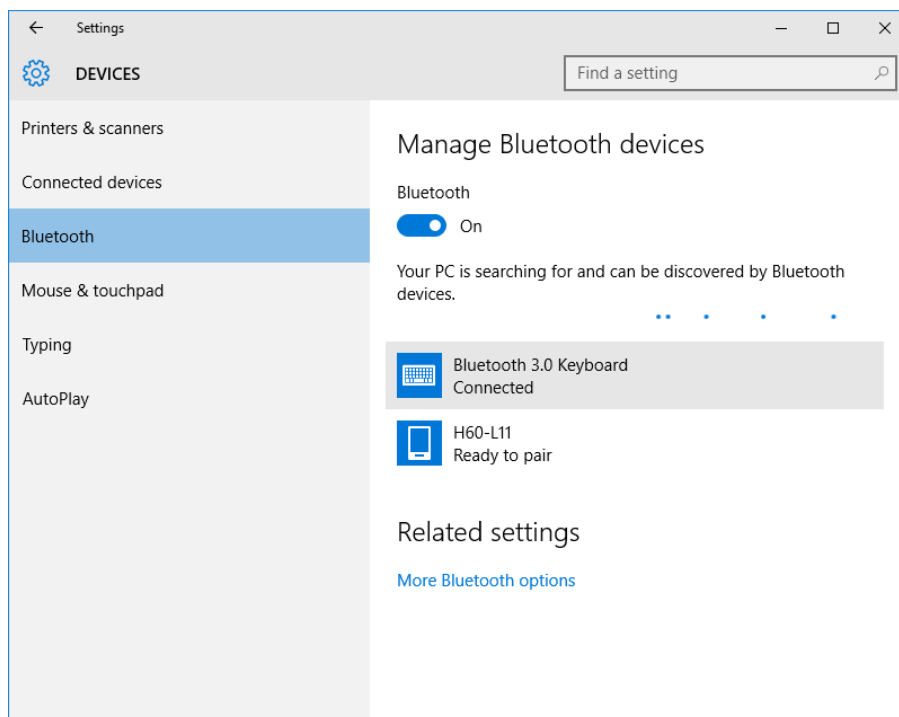
8. While pairing, a number will appear on the screen.



9. Once the number appears on your screen, quickly go to your Bluetooth Keyboard, type the number that appears on the screen, and press the Enter key.



10. Process may take several moments. Once the screen shows **CONNECTED**, you have successfully paired the keyboard!



NOTE: If device did not pair properly, Select BLUETOOTH 3.0 KEYBOARD on the screen, followed by REMOVE DEVICE, and repeat from Step 6.

