

Android Reset Instructions

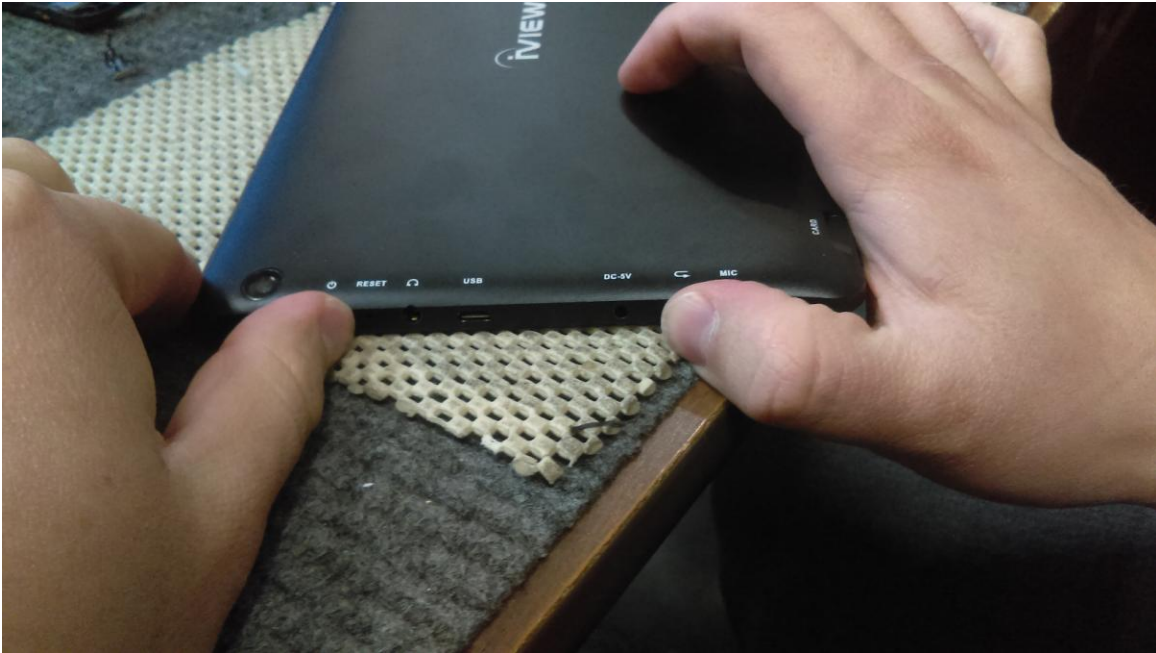
1.) Make sure your device is completely TURNED OFF.



2.) On your tablet, you can find Volume Buttons, a Return button (⏪) or both



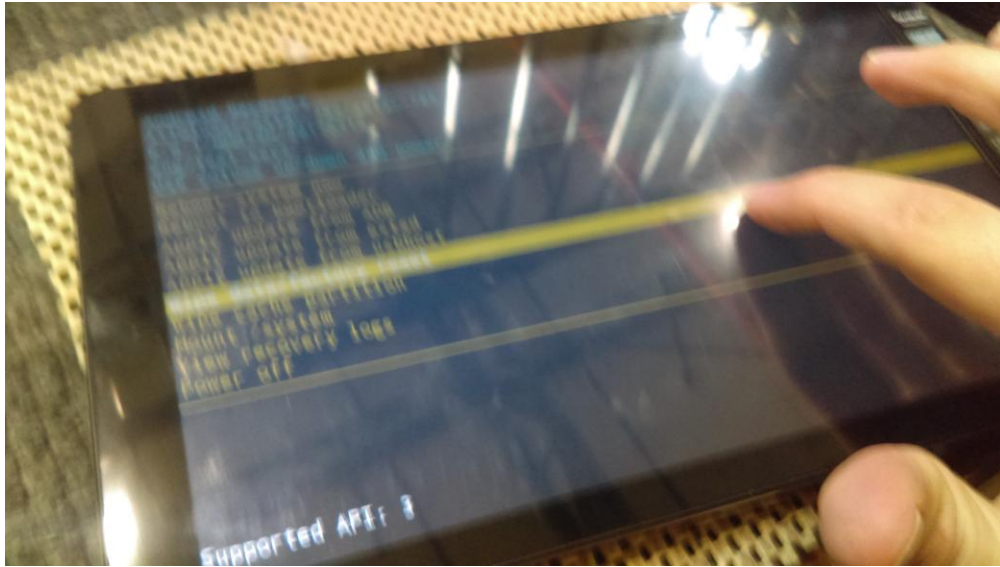
3.) Press and hold both the Power Button, and the Volume+ Button.
(If your tablet has a Return ↵ button, press and hold both the Power and Return ↵ buttons.)



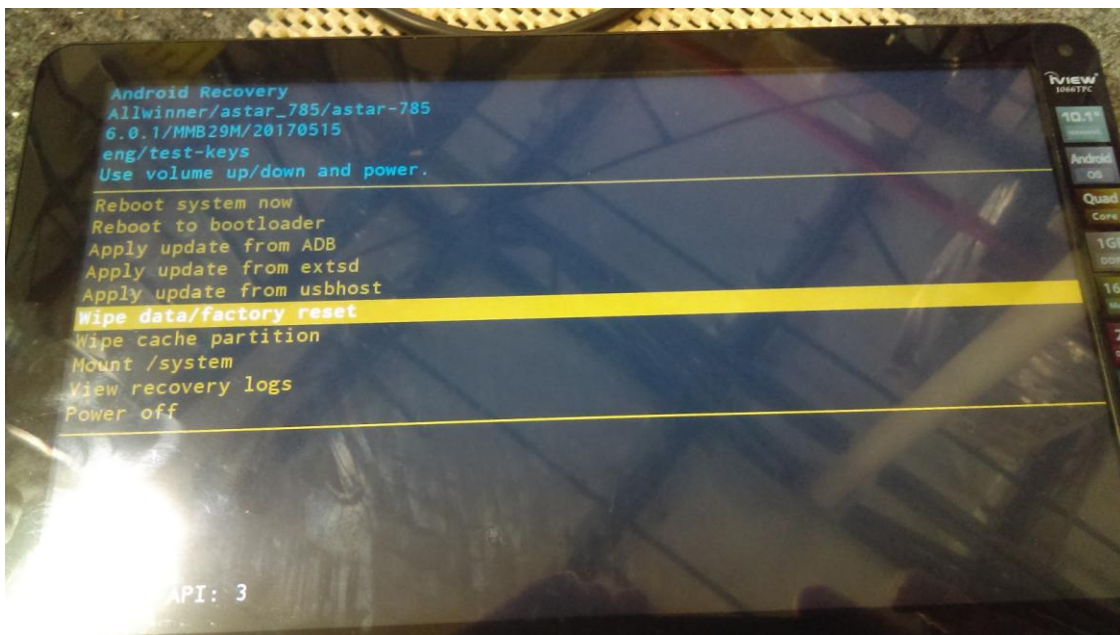
4.) If done correctly, you will see the following menu on the screen.



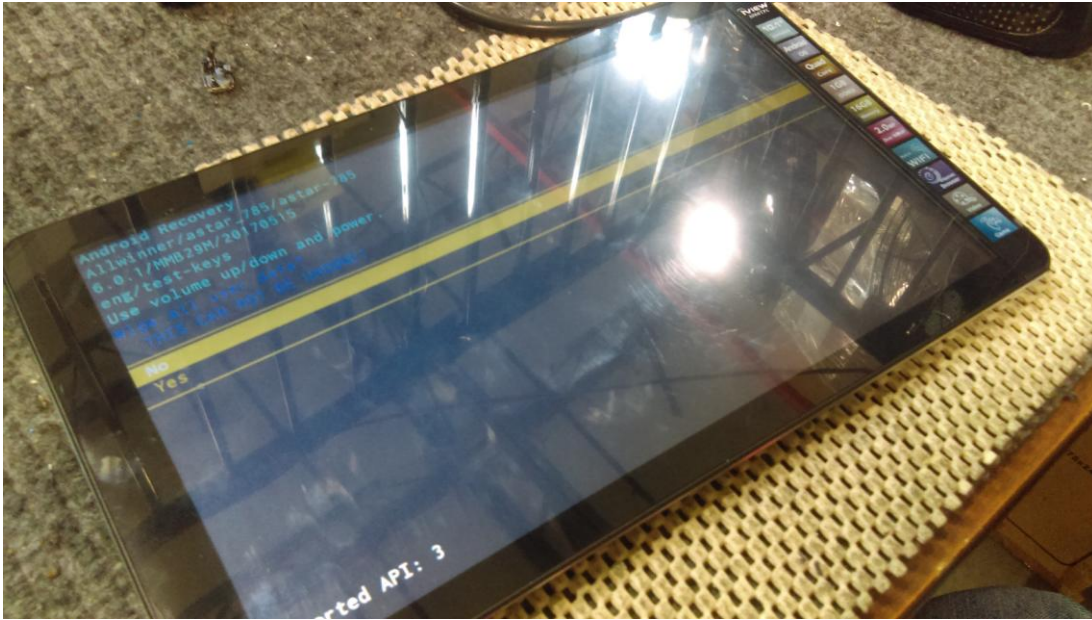
5.) In this menu, you can navigate the menu using either the Volume buttons or the Touch Screen, and you can select options with the Power Button.



6.) Use the Touch Screen or Volume buttons to highlight **WIPE DATA/FACTORY RESET**. Tap on the power button to select it.



7.) You will be then taken to the following screen.



8.) Use the Touch Screen or Volume buttons to highlight **YES**. Tap on the power button to select it.



9.) Tablet will begin resetting. The process will take a few minutes.



10.) Once finished, you will be taken back to the main menu. Make sure **REBOOT SYSTEM NOW** is highlighted and tap on the power button.



11.) Tablet is ready for use.